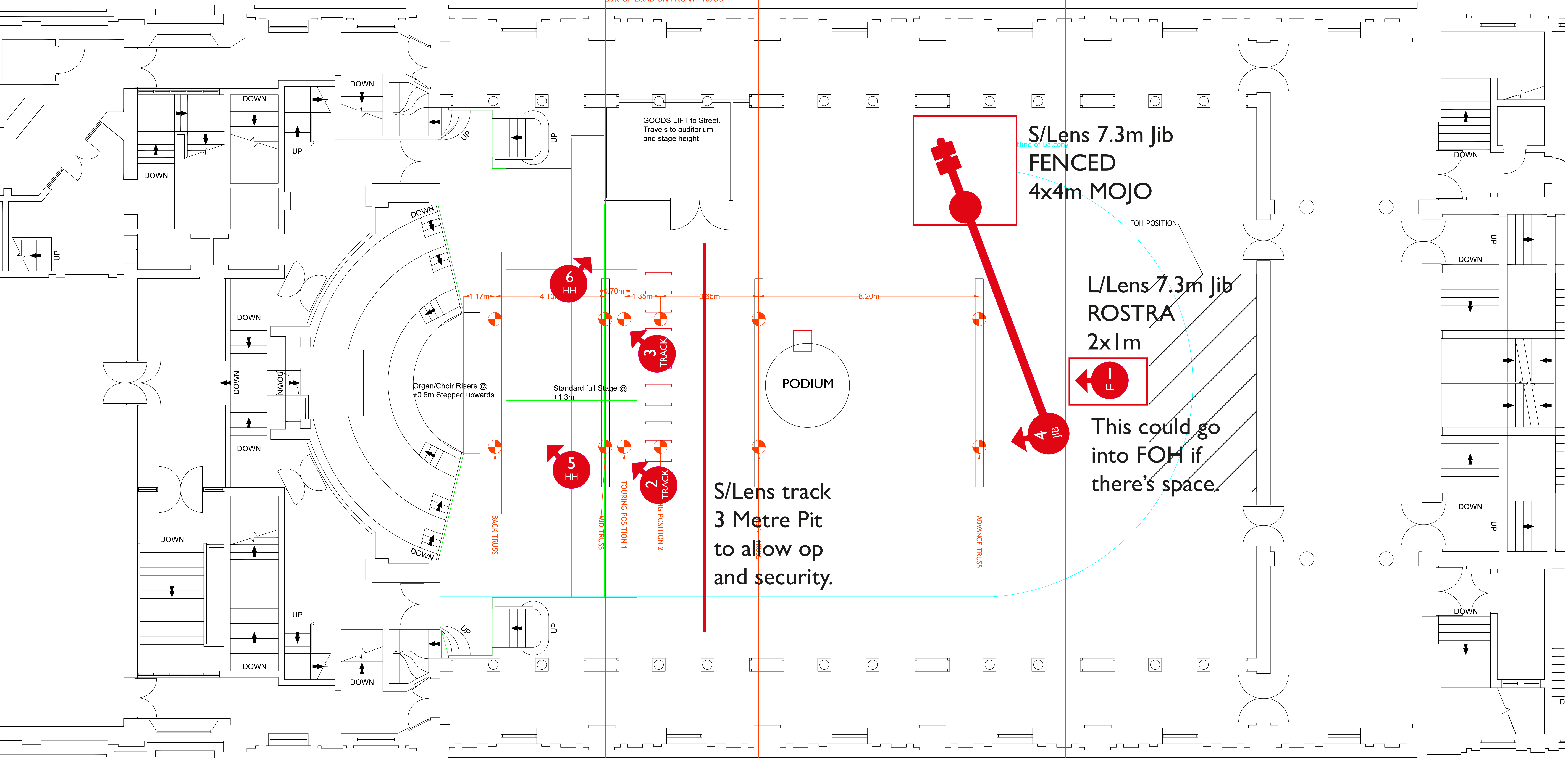


Height to Ceiling from Flat Floor : 16.8m
 Height to Ceiling from Stage Height: 15.5m

- RIGGING BAY 1**
 MAX SWL: 1,300KG
 WEIGHT OF TRUSS AND MOTORS AND ANY RIGGED EQUIPMENT TO INCLUDE:
 100% OF LOAD ON BACK TRUSS
 50% OF LOAD ON MID TRUSS
- RIGGING BAY 2**
 MAX SWL: 1,000KG
 WEIGHT OF TRUSS AND MOTORS AND ANY RIGGED EQUIPMENT TO INCLUDE:
 50% OF LOAD ON MID TRUSS
 100% OF LOAD ON TOUR POSITION 1
 100% OF LOAD ON TOUR POSITION 2
 50% OF LOAD ON FRONT TRUSS
- RIGGING BAY 3**
 MAX SWL: 1,000KG
 WEIGHT OF TRUSS AND MOTORS AND ANY RIGGED EQUIPMENT TO INCLUDE:
 50% OF LOAD ON FRONT TRUSS
- RIGGING BAY 4**
 MAX SWL: 1,000KG
 WEIGHT OF TRUSS AND MOTORS AND ANY RIGGED EQUIPMENT TO INCLUDE:
 100% OF LOAD ON ADVANCE TRUSS
- RIGGING BAY 5**
 MAX SWL: TBC



S/Lens 7.3m Jib
FENCED
 4x4m MOJO

L/Lens 7.3m Jib
ROSTRA
 2x1m

This could go into FOH if there's space.

S/Lens track
 3 Metre Pit
 to allow op
 and security.

- 6 HH
- 5 HH
- 3 TRACK
- 2 TRACK